

Installation procedure SPR 532.

First of all we will install the Belgian Identity Card Middleware.

You can download the software from the fedict website:

http://www.belgium.be/zip/eid_datacapture_nl.html

or

http://www.belgium.be/zip/eid_datacapture_fr.html

Download the Belgian Identity Card Run-time software in the language you prefer.

Once the file is downloaded, unzip, and install.

When installation of the software is complete a new icon will appear on your desktop.

Do not start the program yet.

Download the SPR532 drivers from our website and save them in a dedicated directory or on your desktop.

<http://www.arena-solutions.be/downloads/eid/drivers/sprx32/sprx32.zip>

Go to the directory where you saved the sprx32.zip file and extract the file to another dedicated folder. E.g. C:\sprx32

To unzip a file you need winzip. You can download winzip at <http://www.winzip.com>

(Note: Windows XP contains its own unzip software, see Windows XP help, and search for "extract" for more information on this feature)

Connect the USB Card Reader to your computer and wait a few seconds. The "Found new hardware wizard" will start.

If you are asked to connect to Windows Update, select, "No, not at this time"

Click next.

Select "Install from a list or specific location (Advanced)" and click next.

Choose "Include this location in the search", and click browse.

Browse to the folder C:\sprx32 (or the folder where you previously extracted the zip file)

Open the folder SPR332 USB Driver Ver4.28.00.01, open the folder Win2k_XP or

WIN9X_ME depending on your operating system and click ok.

Click Next in the "Found new hardware wizard". A pop up window will open.

Click Continue Anyway.

Drivers are now installed.

Click Finish.

Open the previously extracted folder again (C:\sprx32), and open the SPR532_fw5.05 directory.

Doubleclick the FwUpdate.exe file.

Click OK.

"During DFU operation, ..." Click OK.

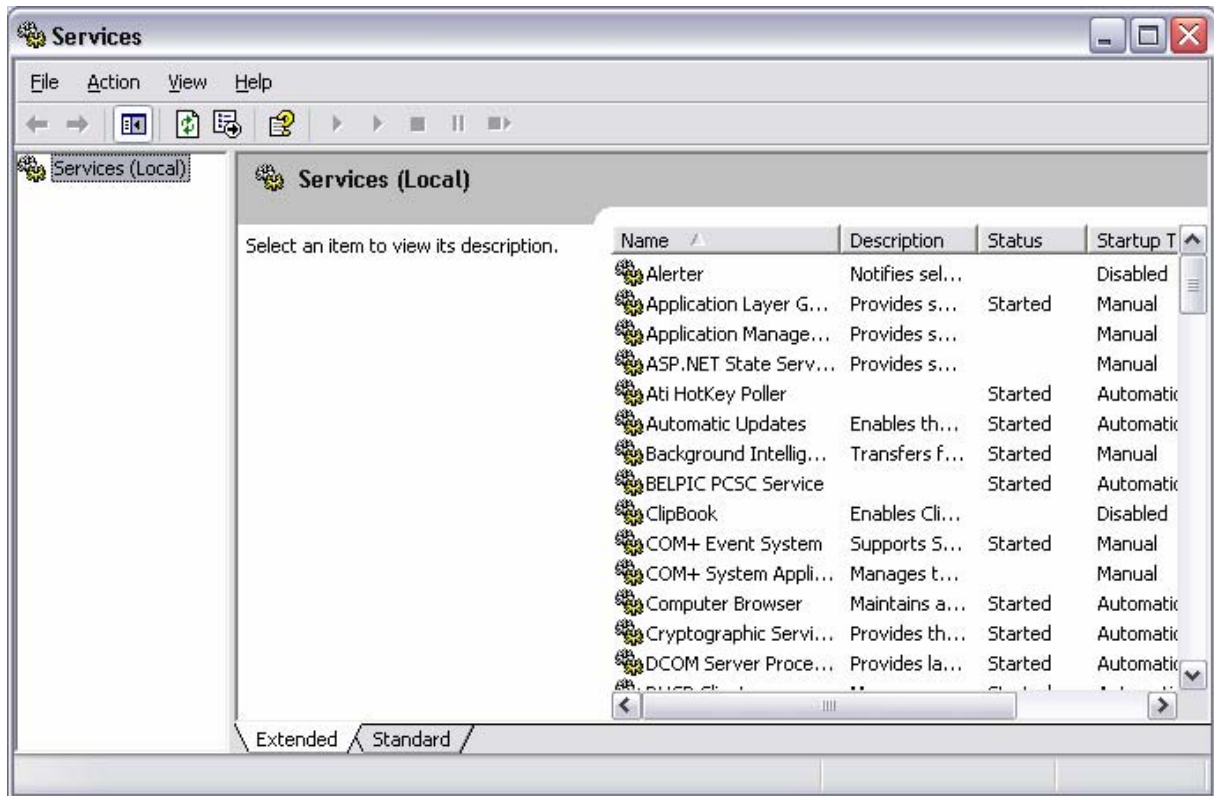
In the Generic Device Firmware Upgrade Utility window click Browse...

Browse to the SPR532_fw5.05 directory and select the Spr532_fw_V5.05.bin file, and click open. Click next. Click Finish. Click Close.

Open the previously extracted folder for the last time (C:\sprx32), and open the pinpad folder and doubleclick SPRx32EID_install.exe.

The last thing we need to do is stop the belpic PCSC service. Click Start, Control Panel, Administrative tools, and doubleclick on Services.

A new window will open:



Click with your right mouse button on the BELPIC PCSC Service and choose "stop". The service is now stopped.
 Click with your right mouse button again on the BELPIC PCSC Service and choose properties.
 Change Startup Type "Automatic" to "Disabled". Click on apply, click OK.
 Close all windows.

The SPR332 cardreader is now installed.
 Restart the pc.

After you restart the computer, doubleclick the eID GUI icon on your desktop.
 Click on the chip icon to read data from the eID card.

To change your pin code, go to the Card & Pin tab. Select Basic PIN, and click "Change PIN".
 A new window will open:



Enter your Current pin, your new pin and confirm your new pin code. To confirm your input press the Green button on the SPR card reader.

If you have any problems installing the reader you can always call our helpdesk at

0902/520.20